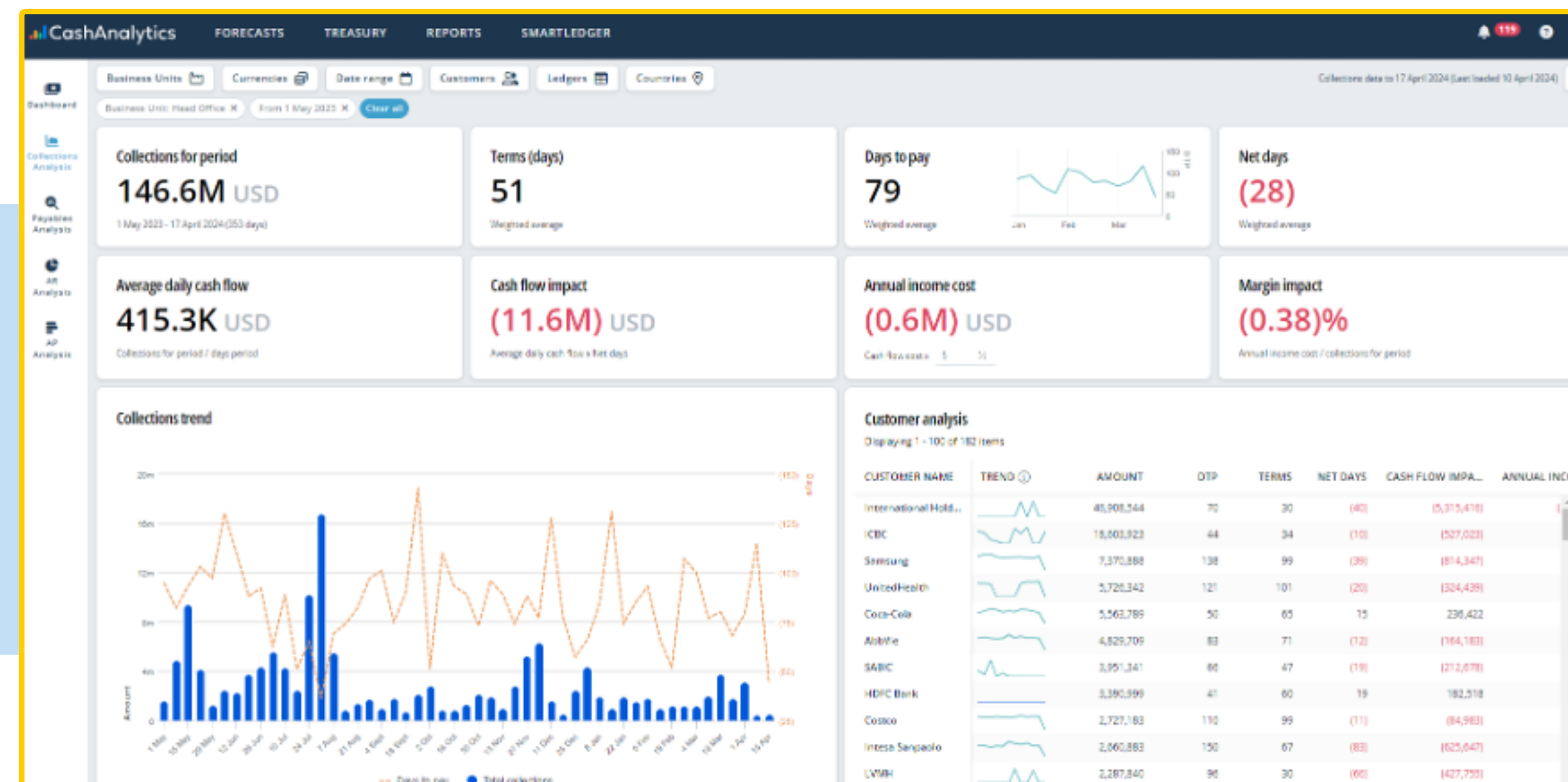


Transform AR, AP, and working capital with SmartLedger

SmartLedger

Managing Accounts Payable (AP) and Accounts Receivable (AR) is vital to effective cash flow management but often faces challenges like data inaccuracy, limited visibility, and inefficiencies due to manual processes. These challenges hinder accurate cash flow forecasting, manage late payments, and ensure timely payments to suppliers. Additionally, a lack of automation and integration across financial systems further complicates reporting, compliance, and overall financial decision-making, driving up operational costs.



CashAnalytics SmartLedger is an intelligent software solution that helps CFOs and treasury teams overcome common challenges in AR and AP analytics by:

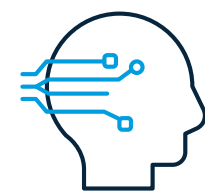
- Providing fast and highly accurate short-term cash flow forecasting by integrating historical data with current ledger and bank information
- Offers real-time visibility insights, enhanced accuracy, and automated process for seamless cash flow management
- Automatically generates intelligent cash flow forecasts, enabling seamless management of financial operations for more efficient decision making

Why Leading Companies are Using SmartLedger



Improve Free Cashflow

Optimize Days Sales Outstanding (DSO) and Days Payable Outstanding (DPO) with SmartLedger to improve free cash flow through enhanced accuracy, real-time visibility into payments and cash positions, and automated processes that reduce overdue payments and boost financial efficiency.



Intelligent AR Predictions

Leverage the AI-powered forecasting algorithm to significantly improve accounts receivable forecast accuracy by analyzing customer payment history and using this intelligence to generate precise forecasts.



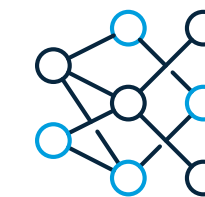
Rapid Forecast Creation

Rapidly create data-driven cash flow forecasts with no manual input using a combination of ERP data, bank information and AI-powered customer payment behaviour analysis.



Plan with Confidence

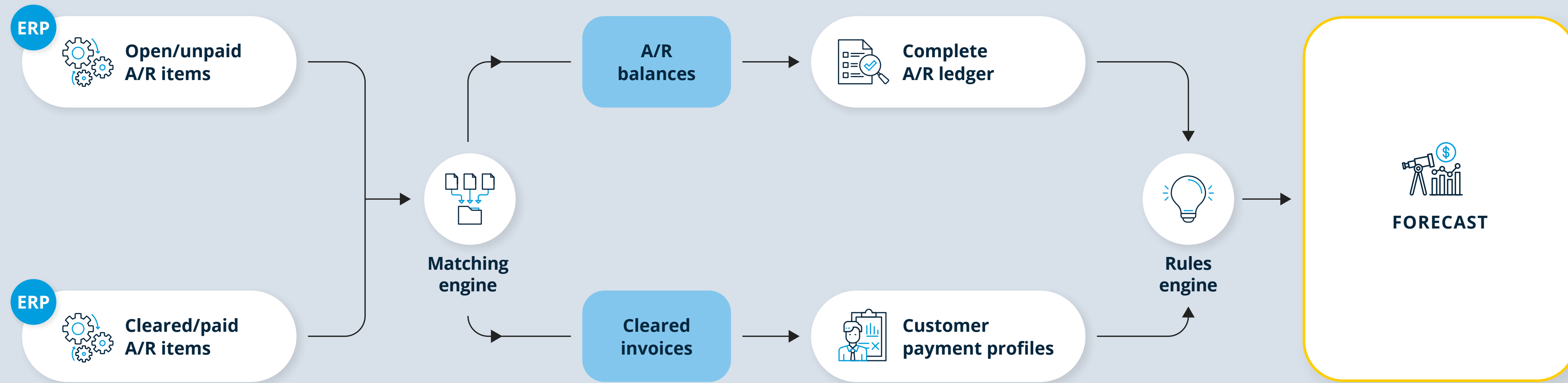
Confidently plan future cash needs by gaining a thorough understanding of upcoming cash flow behaviour using various analysis and visualization too.



Always Live

Keep your cash forecast live and up to date with SmartLedger's continuous updates from the latest invoice cash flow data available in your ERP.

How SmartLedger Works



1 Integrate AP & AR ledgers to analyse payment behaviour and automate forecast creation at local level

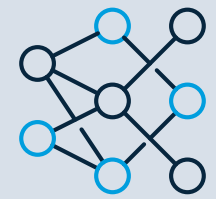
2 All teams get a detailed breakdown of customer and vendor payment history

3 Cash forecasts are auto-adjusted with learned behaviour for better accuracy

4 Performance dashboards available to all stakeholders to drive collective improvements in cash flow

Key Features

AR & AP Forecasting



ERP connectivity

Automate the retrieval of data needed from AP & AR ledgers to create highly accurate short terms forecasts.



Days to Pay Insights

Analyse any customer or vendor by amount due or overdue, or their average days to pay.



Intelligent Forecasting

Forecasts are auto-adjusted for historic payment behaviour of customers & vendors.



Customer & Vendor Profiling

Detailed payment history profiling to understand trends and payment patterns.



Transaction Drill Down

Working capital insights are directly linked to forecasts with drilldown to invoice level data.



Payment Versus Terms

Review customer payment performance versus terms to see percentage paid late/ early.

Working Capital Analytics



Collections / Payables Analysis

Targeted insights into where cash flow & income is being lost across AR & AP.



AR & Overdue Analysis

Quickly analyse the current health of cash collections at both a consolidated & transactional level of detail.



Customer Analysis

Analyse a league table of most impactful customers with drill down to invoice level detail.



Ageing Analysis

Insights into AR/AP ageing with a profile of current health as well as historical trends.



Payment Behaviour

Review consolidated payment behaviour of customers and adherence to payment terms to measure the financial impact.

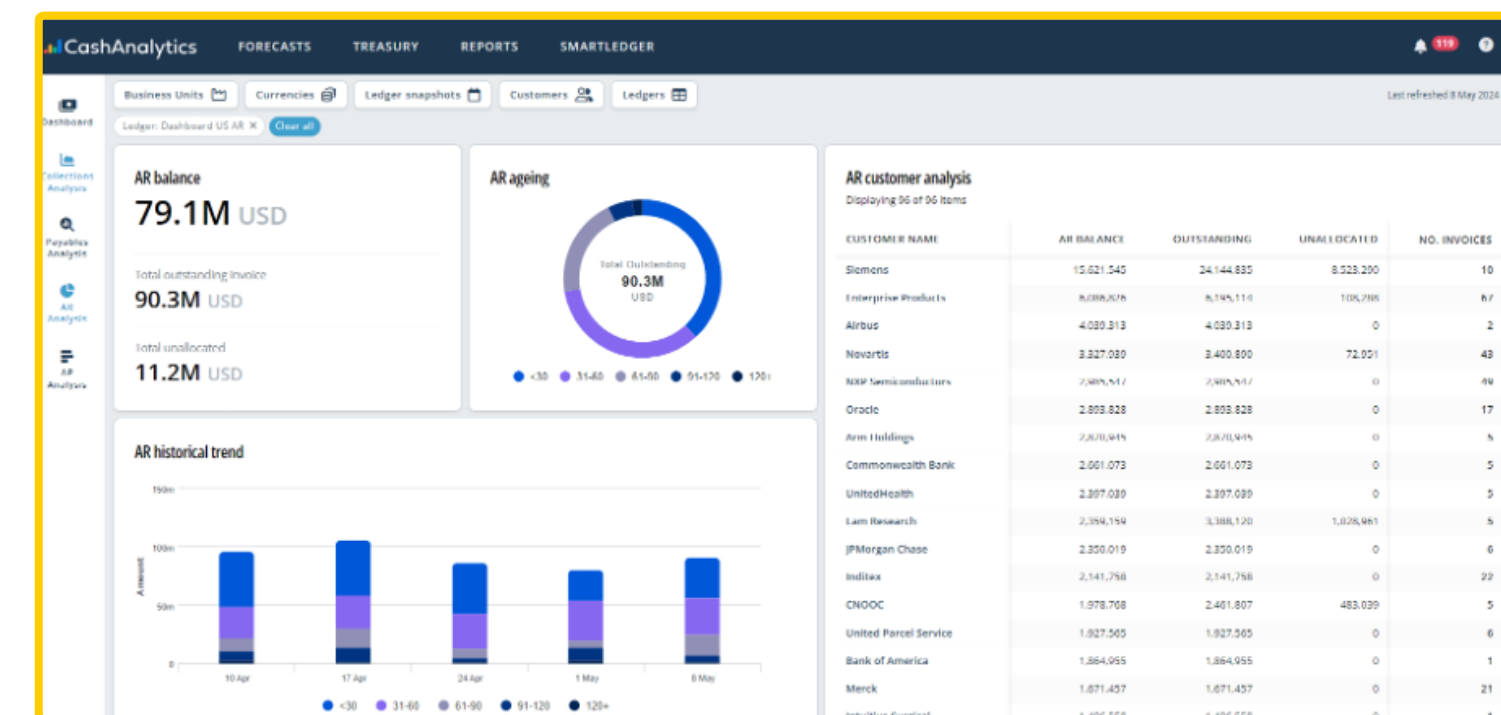
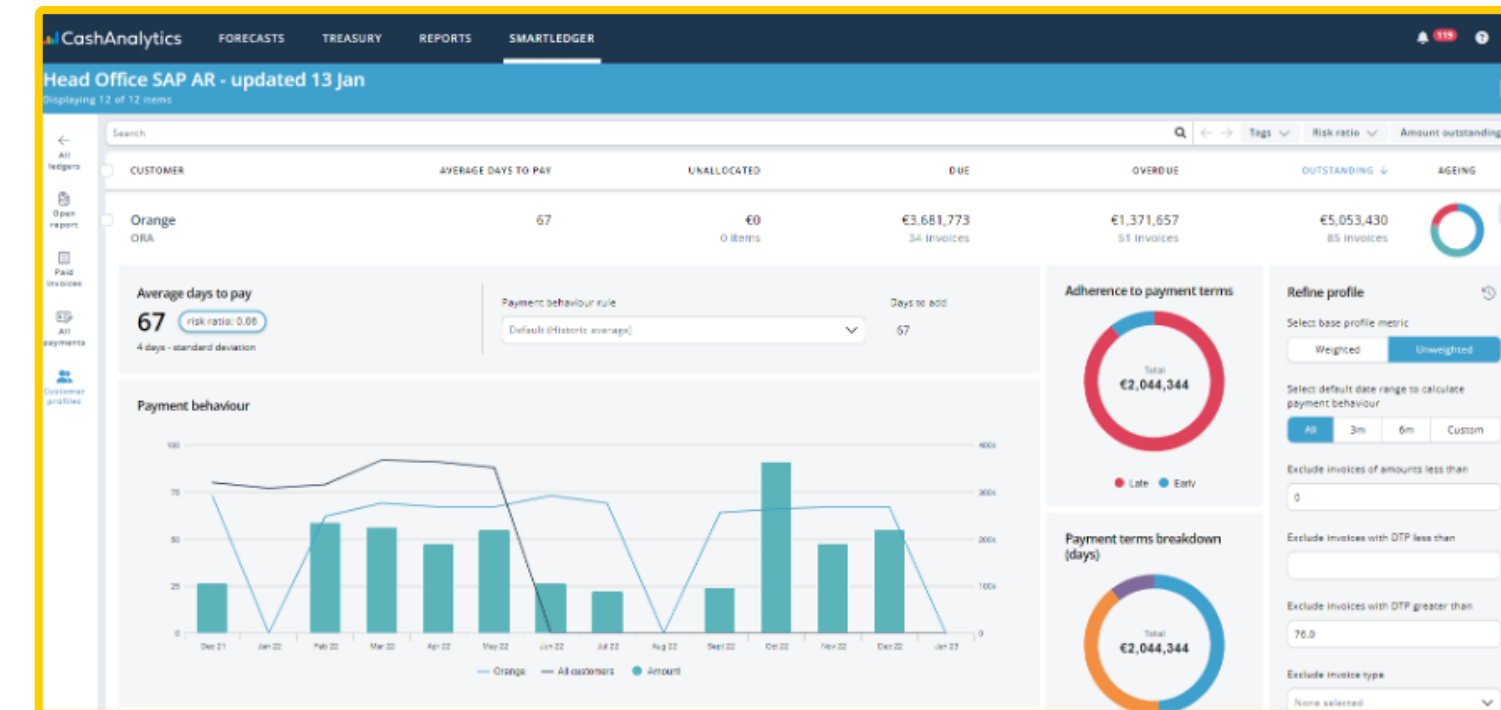


Company-Wide Insights

Slice and dice this data several different ways using filter options such as business unit, customers, ledgers & country.

Key Benefits

- ERP Connectivity
- Short term AP and AR forecast automation for local controllers
- Medium trend term forecasting using historical data
- Customer payment profiling with calculated days to pay and payment trends
- Internal/supplier payment behaviour profiling
- Create forecast rules per customer and supplier
- Detailed ageing and overdue analysis



SmartLedger

About GTreasury

GTreasury is the pioneer and global leader in cloud-based software for the Office of the CFO. For over 30 years, GTreasury has delivered industry-leading solutions spanning cash, payments, debt, derivatives, investments, and exposures, all in one seamless platform.

Trusted by over 1,000 customers across 160 countries, GTreasury provides treasury and finance teams the ability to connect, compile, and manage mission-critical data to optimize cash flows and capital structures.

GTreasury is headquartered in **Chicago**, with locations serving EMEA (**London**, **Geneva** and **Dublin**) and APAC (**Sydney**, **Singapore**, and **Manila**).

Contact

International Toll 847.847.3706

APAC (Sydney) +61 2.9262.6969

EMEA

London 866.551.3534

Dublin +353 1 524 0552

Geneva +41 22 311 13 83

North America Toll Free 866.551.3534



 [GTreasury.com](https://www.gtreasury.com)

 ContactUs@GTreasury.com

